



ANNUAL REPORT
2025-2026

MUCH MORE THAN A SHELTER

Solutions to guide women from precarity
to autonomy



Charitable Number: 101835841RR0001

CHEZ DORIS, MUCH MORE THAN A SHELTER

Life can change in an instant. Challenges arise without warning, and precarity can reach any woman, without exception. It is a constant, and women feel it deeply. That is why Chez Doris matters: a welcoming place, free of judgment, where every woman can find her feet again at her own pace, with her own story respected.

Chez Doris supports women from every walk of life, at many different moments. Their needs change over time, so the support has to be steady, close at hand, and shaped around each woman's own path.

Today, Chez Doris is much more than a shelter. Across our six service centres, we offer everything from a day shelter and emergency help to transitional housing and permanent homes.

In each case, we give women practical tools and support tailored to them, helping them avoid homelessness or move from precarity toward greater independence.

This year, nearly 2,000 women came through our doors. They found someone who listened, along with support and guidance suited to their needs, which helped them take back control of their lives and move toward greater stability.

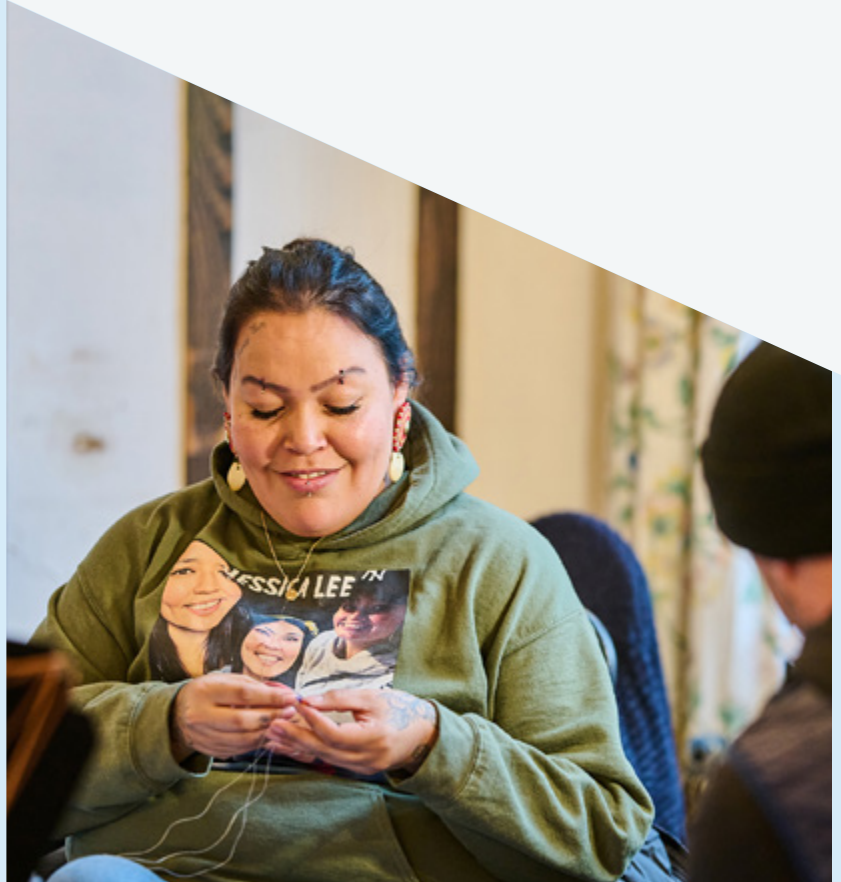
By building resilience and creating chances to rebuild confidence, we help open paths to independence, one step at a time.



SUMMARY

ABOUT CHEZ DORIS	6
Values, mission and vision	8
Message from the Chair	9
Message from the Executive Director	10

OUR ACTIVITIES	12
The year 2025-2026 at a glance	14
Profile of the women we serve	16
Inspiring successes	18
Our service locations	20
Points of services at a glance	22
Emergency and prevention services	24
Housing services	26





Our programs	28
Food Security Program	30
Personal Hygiene Program	31
Housing Support Program	32
Physical and Mental Health Program	33
Employability and Reintegration Program	34
Financial Management Program	36
Indigenous Support Program	36
Social and Recreational Program	37

OUR NETWORK	38
Our Community Involvement	40
Our Volunteers	42
Our Institutional Partnerships	44
Our Major Donors	45
Our Board of Directors and Committees	46
Our Team	47
OUR FINANCIAL STATEMENTS	48
Summary of financial statements	49



A woman with glasses and a black puffer jacket is looking upwards. She has a grey bag slung over her shoulder. The background is a blurred outdoor setting. A teal triangle is in the top left corner.

ABOUT CHEZ DORIS



FOR 50 YEARS, CHEZ DORIS HAS HELPED WOMEN IN NEED

In the 1970s, a community worker set out to ask the women living on the streets of Montréal what they needed most.

Among them was Doris, who was struggling to survive in difficult conditions. When asked what kind of help women in her situation needed most, her answer was clear: "A place to go, without prying eyes or too many questions."

That simple but piercing answer laid bare how much these women were suffering. Tragically, just after that conversation, on November 3, 1974, Doris was violently murdered.

To honour her memory, and to meet the many obstacles women face in finding a safe haven, Chez Doris opened in 1977. It has since become a symbol of compassion for vulnerable women across Montréal. Its mission: to offer a safe place, open to all, where women can find support, recover their dignity and rebuild their lives.

From emergency aid to support toward autonomy

At its founding, Chez Doris offered basic essential services: hot meals, clothing, occasional support. Today, we do far more, because the situations women face have grown more complex. Our services now include physical and mental health care, a night shelter, reintegration programs, transitional housing and even permanent homes.

This year, nearly 2,000 women turned to Chez Doris. Whether they are fleeing violence, poverty, loneliness or health challenges, they find here a humane place, grounded in inclusion and respect.

Our mission: helping to transform lives

For nearly fifty years, Chez Doris has been an anchor for women in vulnerable situations, offering a safe place, a steady presence and support that fits their lives.

More than ever, we keep Doris's legacy alive by carrying the voices of all those who press on with courage despite the odds. As long as women live through distress, they will need a place that welcomes them, listens, and stands by them with respect and dignity.



VALUES THAT GUIDE EVERY ONE OF OUR ACTIONS



INCLUSION

We offer a welcoming, safe, inclusive, confidential, respectful, supportive, and beneficial environment for every woman who walks through our doors.



EQUITY

We support all women and defend policies that reduce oppression, while recognizing lived experiences of poverty, violence and homelessness, and fostering relationships with people from diverse cultures.



DIGNITY

Every woman has the right to be safe, included, respected, and accepted as she is. Our services are delivered without judgment.



COMPASSION

Kindness and respect are at the heart of who we are and how we behave, as is our belief that women grow and flourish when they know themselves, can be authentic, and believe in their own strengths; these values guide how we behave every day.

MISSION

To provide comprehensive and compassionate support to women in vulnerable situations, strengthening their well-being and promoting their empowerment.

We do this by offering safe spaces and a wide range of services where women can access non-judgmental support — from food, clothing, shelter, and housing solutions to personal comfort and practical assistance as they navigate change and the challenges they face.

We recognize that success looks different for every woman. We strive to find long-term solutions that address the challenges they face and enable them to become self-sufficient.

VISION

That every person who identifies as a woman and is vulnerable or experiencing homelessness in our city feels safe, is treated with dignity, and has the opportunity to thrive.

GOVERNANCE DEDICATED TO SERVING WOMEN



The number of vulnerable women is soaring, and this growth is not a victory. It reflects a social and economic context that is leaving more and more women in fragile circumstances.

I remember clearly the moment I decided to join the Board of Directors of Chez Doris back in 2016. My intention was simple and sincere: to help improve the lives of women facing precarious circumstances.

Nearly ten years later, now serving as Chair of the Board, that commitment has not diminished. If anything, it has grown stronger, shaped by everything I have seen, understood, and learned from the organization and the women we support.

Over the years, I have witnessed a profound transformation at Chez Doris. What was once a weekday emergency refuge has become a true network of support, offering a continuum of services tailored to increasingly complex realities. Our reach has expanded, our programs have diversified, and the number of women we accompany each year has grown significantly. This evolution reflects the organization's remarkable ability to adapt and innovate. But it also highlights a troubling truth: the number of women in vulnerable situations is rising rapidly. This growth is not a victory. It is reflection of a social and economic context that is placing more and more women at risk.

It was with this clarity of purpose that I accepted the role of Chair last June. I am deeply grateful for the trust placed in me and proud to contribute to an organization whose mission is more essential than ever. Together with my fellow board members, we are responsible for creating the conditions that will support Chez Doris' continued growth while strengthening its foundations. This requires rigorous governance, long term vision, and a steadfast commitment to the values that have guided the organization since the beginning.

I also want to extend a warm welcome the new members who have joined our Board. Each of them brings impressive experience, skills, and a shared dedication to advancing a cause that matters deeply to all of us. Their fresh perspectives and expertise strengthen our collective ability to guide the organization through this pivotal moment.

I am equally pleased to reaffirm, on behalf of the Board, our full confidence in our Executive Director, Diane Pilote. Over the past two years, she and her team have accomplished exceptional work in a demanding environment. Her leadership, discipline, and deep commitment to women make a real and lasting difference. As Chair, my role is to ensure she has everything she needs to continue this essential work and to reach even more women, because we know the needs will not decrease.

Today, Chez Doris stands as a vital pillar for women in vulnerable situations. Together—board members, staff, volunteers, partners, and donors—we share the responsibility of supporting this mission with conviction. Because helping women today also means contributing to a more just and humane society for tomorrow.

Jill Hugessen
Chair of the Board of Directors
Chez Doris

RESPONDING TO URGENCY, BUILDING FOR THE FUTURE



Financial insecurity has become the tipping point in far too many lives.

Two years into my role as Executive Director, I am reminded every day of the scale of the challenges the women who come through our doors face.

What we see on the ground is unmistakable: financial insecurity has become the tipping point in far too many lives. The cost of housing, food, and essential services continues to rise, while women's incomes—especially for those living alone or raising children on their own—remain insufficient. This constant pressure destabilizes, isolates, and too often pushes women into situations of profound vulnerability.

That financial strain feeds straight into something else we watch with growing concern: more and more women becoming homeless. Much of it stays hidden, out of public view—sleeping in a car, staying somewhere unsafe to keep a roof overhead, moving from one stopgap to the next to stay off the street. Yet in Montréal today, women make up nearly 30% of people who are homeless, and that share is rising fast. It confirms what we see every day: homelessness among women is no longer a fringe problem. And behind every journey is a woman who strives, against all odds, to preserve her dignity and that of generations to come.

The winter of 2025 brought this reality into sharp focus. The pressure on our emergency services was immense. In response, Chez Doris expanded its capacity to protect the women most at risk. With additional emergency resources, we were able to welcome up to 60 women per night during the coldest months. This response was essential—but it is only the first safety net.

We also see, very clearly, the impacts of a strained healthcare system: more and more women arrive with significant physical and mental health needs, with no possibility of receiving adequate care elsewhere.

After two years leading Chez Doris, I felt I had to put these facts into words and bring them to decision-makers. My aim was to underline a simple truth: frontline organizations cannot carry this crisis alone. It was also an invitation to start talking about lasting solutions— income support, affordable housing, and stable, fair funding for the specialized services on which women in precarious situations rely.



Diane Pilote, Executive Director of Chez Doris, with Brigitte as she moved into her apartment.

Beyond the immediate crisis, we see a critical lack of resources designed specifically for vulnerable women—whether emergency, transitional, or permanent—as well as increasingly limited access to affordable housing.

Despite the magnitude of the challenges, this year also brought major progress.

The opening of our transitional residence on Saint-Hubert Street—our first—now completes our continuum of services. This new living environment offers women a crucial step between emergency shelter and long-term stability, in a safe setting with tailored, human support.

The Maison Fulford project also reached an important milestone. Its funding is now secured, and the project is advancing on schedule toward an opening in 2028.

This future residence reflects our collective commitment to building durable solutions rooted in dignity and hope.

And we are already looking ahead. We are building new kinds of support, including housing dedicated to mothers and children—a safe, welcoming place where women can be supported as parents while breaking cycles of precarity. Because when we support a woman, we also protect the generations that follow.

I want to express my deep gratitude to our Board of Directors and its new Chair, Jill Hugessen. Their trust is invaluable and reflects a shared commitment to rigour, transparency, and the ongoing transformation of our organization for the benefit of the women we serve.

I invite you to read this annual report and take in the full reach of the support we provided at Chez Doris. Behind every service, every project and every figure are dedicated people, daily acts of care, and women finding their footing again—often in extraordinarily hard circumstances.

None of this would be possible without the remarkable commitment of our staff, volunteers, partners and donors. Your support lets Chez Doris keep acting, keep speaking up, and keep building solutions that truly matter.

The challenges remain immense. But together—with humanity, determination, and courage—we will continue to move forward.

Diane Pilote
Directrice générale
Chez Doris



OUR ACTIVITIES



OUR RANGE OF SERVICES TO PREVENT, GUIDE AND HELP WOMEN REGAIN THEIR AUTONOMY

Chez Doris has supported the most vulnerable women, helping them leave the street or avoid it in the first place. We take a whole-person, humane approach, free of judgment, with programs shaped around each woman's needs and circumstances.

Every day, our teams walk alongside women as they work toward greater stability—meeting urgent needs one moment, helping build a safer, more independent future the next.

Chez Doris has several service locations in Montréal, some accessible 24 hours a day, 7 days a week:

- a day centre and a 24-hour respite stop during the winter season;
- a night shelter;
- a health and services centre;
- transitional and permanent residences.

With a full range of services and programs—to prevent, to reintegrate, to reconnect—we can support women at every stage, from meeting basic needs to strengthening their autonomy.

THE YEAR 2025-2026

AT A GLANCE

We track how our services are used so we can understand the women we support, adjust what we do, and guide the way our programs grow.

The numbers show the scale of what Chez Doris meets every day, and why services have to be accessible, varied, and suited to the lives of women in vulnerable situations.

The statistics presented in this annual report cover the period from April 1, 2025 to March 31, 2026.



27,000+

VISITS TO THE DAY SHELTER



8,000+

NIGHTS AT THE NIGHT SHELTER



81,000+

MEALS SERVED
(+30%)



15,000+

SNACKS DISTRIBUTED



9,200+

SHOWERS PROVIDED
capacity doubled thanks to the addition
of a shower at the end of 2025



5,500+

DISTRIBUTIONS
OF EMERGENCY CLOTHING



Nearly \$230,000

PREPAID CARDS
to help women in private housing
meet their basic needs



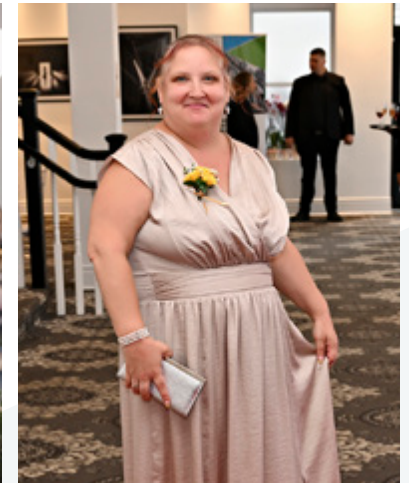
7,000+

HYGIENE KITS DISTRIBUTED



1,200+

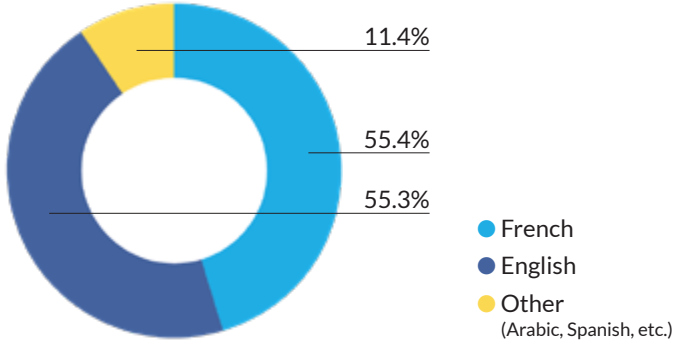
MEDICAL APPOINTMENTS



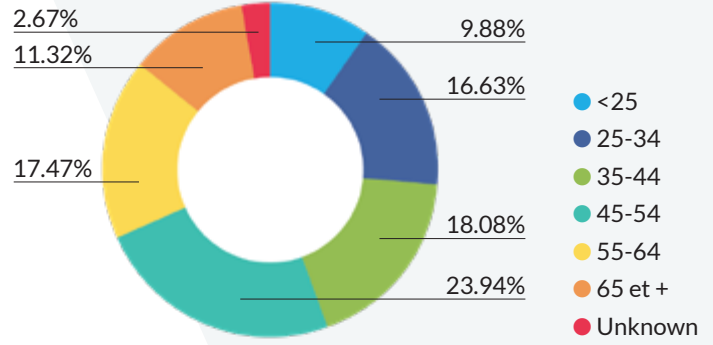
PROFILE OF THE WOMEN WE SERVE

Calculated across all women using our services

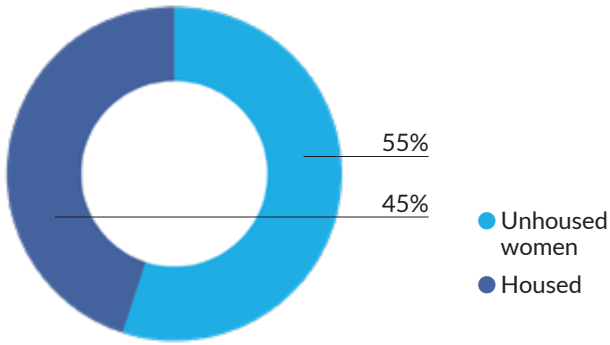
LANGUAGE



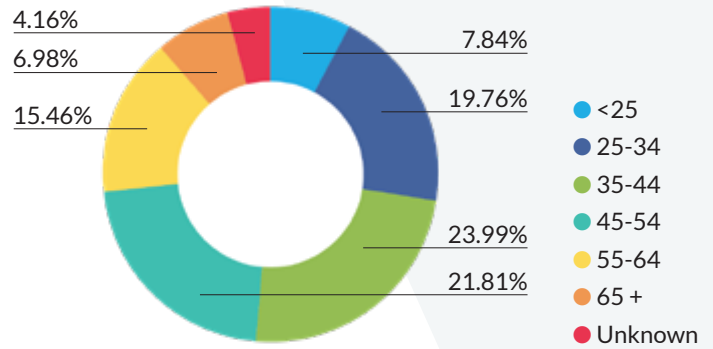
AGE GROUP (HOUSED)



HOUSING SITUATION



AGE GROUP (EXPERIENCING HOMELESSNESS)





A CHANGING, DEEPENING VULNERABILITY

Once again this year, we see vulnerability deepening, settling in over time, and showing new faces. More and more women are turning to us, often for the first time. Among them are more young women, from a wide range of backgrounds and immigration situations.

For many, their income no longer covers the basics. With the cost of living rising and housing harder to find, they are reaching out for help before things slide further.

Each month, more than 50 new women come through the doors of Chez Doris or reach out to our teams for a meal, food support, housing assistance or personalized guidance. Requests in person, by phone and online continue to rise, reflecting an increasingly acute sense of urgency.

This changing face of precarity pushes us to keep adapting. Needs are growing more complex and paths more varied, so our response has to be quick, flexible, and tailored to each woman.

More than ever, our role is to be a safety net, and to offer the kind of support that brings stability, dignity and hope.

INSPIRING SUCCESSES



Lorraine's path has been marked by profound hardship. A victim of violence from childhood, she left her family environment as a teenager and was quickly confronted with exploitation and substance use. For many years, she tried to survive in extremely difficult conditions, all while carrying the weight of deep trauma.

Through it all, Lorraine always kept an inner strength that found expression in writing. Poetry became a refuge for her, but also a way to make sense of what she had lived through. After reaching a breaking point, she began a recovery process that gradually allowed her to take back control of her life and rediscover hope.

Over the years, she became involved with organizations helping women who are victims of sexual exploitation, putting her experience at the service of others.

Her testimony and her writing have become tools for awareness, prevention and support for many women.

Today, Lorraine lives in safe housing thanks to Chez Doris. She continues to write her autobiography and to share her story with courage and generosity. Her journey is a testament to the power of resilience and a reminder that, with the right support, it is possible to rebuild, recover one's dignity and look to the future with confidence.



After spending nearly 20 years on the street and struggling with substance use, **Marie-Claude** embarked on a journey of rebuilding marked by perseverance and hope. For a long time, despite various attempts to turn her life around, she was not ready to begin real change.

The turning point came when she lost custody of her son at his birth. That ordeal marked the beginning of a long path toward stability. Nine years later, Marie-Claude experienced what she describes as the most beautiful day of her life: being reunited with her son. Since then, she has continued to rebuild their relationship and create new memories with him.

First welcomed at Chez Doris to meet her essential needs, Marie-Claude now plays an active role by helping prepare meals for other women. Every gesture reflects how far she has come and her determination to give back in turn.

Thanks to the support she received, she has regained a stability that allows her to take care of herself, grow more autonomous and look to the future with confidence. Her journey shows that with support, time and determination, it is possible to take back control of one's life and recover what matters most.



Marie is a former teacher, a mother and the author of three novels, whose life gradually unravelled following substance use that became difficult to control. Convinced she was keeping her use under control, she slowly slipped into an unstable, nomadic way of life, until she found herself experiencing homelessness, losing almost everything, including her connection with her children.

A pivotal event sparked a change in direction: the news of her granddaughter's upcoming birth. This news was a defining moment, prompting her to want to take back control of her life and to accept help.

Today, Marie lives at the Marcelle and Jean Coutu Residence, where she is continuing a rebuilding process begun nearly two years ago. There she is gradually regaining her balance, along with a stability that allows her to reconnect with her role as a mother and refocus on what matters to her, especially writing.

Her journey illustrates the importance of a safe living environment and of the support provided to help women reclaim their place and rebuild their future.



Ana's journey has been marked by many hardships, but also by remarkable determination. Born in Guatemala, she arrived in Canada at the age of five. Despite a childhood marked by abuse and violence, Ana found the strength to rebuild her life and enjoyed several years of stability.

A few years later, she gave birth to her two children and became a devoted, present mother. A difficult separation shook the balance she had managed to build. In this context, and already carrying the weight of what she had experienced in childhood, Ana developed substance use problems that gradually led to the loss of her housing, her job and custody of her children.

After several years marked by homelessness and addiction, Ana set out on a path toward sobriety. It was at this point that she found Chez Doris. Through the Sinclair Program, she received the support she needed to resume her secondary studies and achieve a goal she thought was out of reach. Supported in her efforts and backed by concrete resources, she gradually regained confidence in her abilities.

Today, Ana works as a receptionist, is considering studies in psychosocial intervention and is continuing her efforts to regain a greater place in her children's lives. Her story is a testament to the power of resilience and the impact that the right support can have on a woman's path.



OUR SERVICE LOCATIONS

Chez Doris now has six addresses in Montreal, with a seventh under renovation.

-  **THE CAROLE AND ANDREW HARPER DAY SHELTER**
1430 Chomedey Street
-  **THE ELSPETH MCCONNELL NIGHT SHELTER**
1437 Chomedey Street
-  **THE HEALTH AND SERVICES CENTRE**
1445 Lambert-Closse Street
-  **THE BASH SHETTY RESIDENCE**
1565 Saint-André Street
-  **THE MARCELLE AND JEAN COUTU RESIDENCE**
2233 De Champlain Street
-  **TRANSITIONAL HOUSING RESIDENCE**
1617 Saint-Hubert Street
-  **THE FULFORD RESIDENCE, MARCELLE AND JEAN COUTU PAVILION**
1221 Guy Street
Opening in 2028

A GROWING NETWORK OF SERVICES AND ACTIVITIES

Rooted in the Montréal community for nearly 50 years, Chez Doris provides a place of welcome, support and guidance for women in vulnerable situations, whether they are housed or experiencing homelessness. Today, the organization draws on six service locations, including a new transitional housing residence under renovation, to meet needs that are constantly growing, but also more complex and varied.

Driven by dedicated teams, we offer a range of services meets both immediate needs and the steps leading toward greater stability. Welcome, accommodation, food security, psychosocial support, housing assistance and social-participation activities come together to strengthen autonomy, break isolation and foster lasting paths forward.



GROWING TO EXPAND OUR SUPPORT

To offer a diversified range of services that meets a broader array of women's needs

1977

THE CAROLE AND ANDREW HARPER DAY SHELTER
1430 Chomedey St.



- Safe respite shelter
- Dormitory with 10 beds
- Meals, showers, clothing and personal hygiene kit
- Psychosocial support
- Access to a medical clinic
- Social, recreational and cultural activities



2022

THE HEALTH AND SERVICES CENTRE
1445 Lambert-Closse



2022

THE ELSPETH MCCONNELL NIGHT SHELTER
1437 Chomedey St.

- Dormitory with 24 beds
- Showers, sleepwear and snacks

- Housing support program
- Food security and personal hygiene programs
- Access to a medical clinic and physical and mental health program
- Psychosocial support
- Employment and social reintegration program
- Social and cultural recreational activities

2023

THE BASH SHETTY RESIDENCE
1565 Saint-André St.



- 19 individual rooms with private bathrooms and shared common areas
- Psychosocial support
- 24/7 surveillance staff
- Socio-recreational and cultural activities

Our rapid expansion has required us to adapt our practices to ensure the long-term sustainability of our buildings, their effective operation, and a high level of safety. Beyond technical considerations, we pay special attention to ensuring that the women we support feel safe, which remains at the heart of our approach. We also continue our efforts to integrate universal accessibility principles throughout our facilities.

This approach guides the development of environments that are functional, inclusive, and welcoming.

At the same time, tools and processes have been implemented to strengthen our property management practices, allowing us to better plan maintenance and interventions, ongoing monitoring of building conditions, and continuous improvement of our facilities. This approach supports the proactive and sustainable management of our assets, in alignment with Chez Doris’s mission and our commitment to providing high-quality environments for the women we serve.



2026

THE TRANSITIONAL HOUSING RESIDENCE

1617 Saint-Hubert St.



2028

THE FULFORD RESIDENCE MARCELLE AND JEAN COUTU BUILDING

1221 Guy St.



2023

THE MARCELLE AND JEAN COUTU RESIDENCE

2233 de Champlain St.

- ▶ 26 studios
- ▶ Psychosocial support
- ▶ 24/7 surveillance staff
- ▶ Social and cultural recreational activities

- ▶ 19 rooms with private or shared bathrooms and shared common areas
- ▶ Psychosocial support
- ▶ 24/7 surveillance staff
- ▶ Social and cultural recreational activities
- ▶ On-site kitchen, meal and snack service, laundry facilities

- ▶ New day centre for health and on-site services, including a medical clinic
- ▶ 20 transitional housing rooms
- ▶ Opening in 2028



EMERGENCY AND PREVENTION SERVICES

THE HEALTH AND SERVICES CENTRE

The services centre brings together a range of programs and support to help women through daily life and toward stability. They include support with financial management, tax clinics, food assistance through the distribution of grocery cards, access to physical and psychological health services, and guidance through various administrative processes.

Over the past year, the services centre has consolidated its role as the gateway to the full range of Chez Doris services. To simplify access to resources and spare women from having to repeat their story multiple times, we created a single access gateway. This makes it possible to respond quickly to requests, direct women to the appropriate resources or, when necessary, carry out a more in-depth assessment of their situation.

This not only makes services easier to reach, but it also helps us understand the new pressures and obstacles women face. What we learn helps us adjust and strengthen our services so they keep pace with the community's needs.

THE DAY SHELTER CAROLE AND ANDREW HARPER

The day centre is still the main entry point into Chez Doris, and often a woman's first contact with us. Here she finds an answer to her essential needs in a welcoming, accessible and judgment-free environment.

More than a service centre, the Day Centre first and foremost meets women's basic needs by providing three nutritious meals each day, along with hot beverages and snacks. It also offers a welcoming and safe space where women can take a moment to breathe, build connections, meet with support workers, and find a sense of belonging.

Through the activities offered, individualized support, and the many resources available, each woman can move forward at her own pace, according to her unique circumstances, needs, and goals. In an effort to reduce barriers to accessing services, the Day Centre also welcomes certain companion animals, including dogs.

The day centre also helps women rejoin community life and reach our other programs, so they can build a path toward greater stability over time.

THE ELSPETH MCCONNELL NIGHT SHELTER

Just steps from the day centre, the night shelter takes in women in precarious situations each evening, in a place that is safe, warm and respectful. It is more than a bed: it is a chance to rest, to feel safe again, and, when the time is right, to begin moving toward greater stability.

We designed the 24 individual spaces to protect each woman's privacy, dignity and comfort. Stays can meet a range of needs: an emergency situation, a transition period, a moment to rest or the search for steadier support. Working hand in hand with our other services and with community partners, the shelter is often an important step along a woman's path.

This year, we paid particular attention to making our services more accessible and more inclusive. The shelter keeps working to welcome women of sexual and gender diversity, and Indigenous women, with respect for who they are and what they need.

Through our partnership with the Makivvik Corporation, we set aside some spaces for Inuit women passing through Montréal or living in vulnerable situations. Together we can offer a safe, culturally aware place—whether a woman is in transition, reaching specialized services, or waiting to return to her community.

The shelter also recognizes the importance of the bond between women and their pets. We therefore allow animals, a measure that helps reduce barriers to accessing shelter and fosters a sense of safety and well-being for many women.

Beyond a place to sleep, the night shelter is somewhere to be welcomed, heard and helped, where we meet each woman where she is and support she according to her needs.



HOUSING SERVICES

THE BASH SHETTY PERMANENT RESIDENCE



In the Centre-Sud neighbourhood, the Bash Shetty Residence offers 19 private rooms, along with shared spaces built for community, mutual support and a sense of belonging.

The kitchen, living room and community room become gathering places where residents can connect, engage in activities or get involved in various committees.

This living environment is intended for women aged 18 and over who are looking for stable, affordable housing. Through the Rent Supplement Program (RSP), housing costs are adjusted to each resident's financial means and capped at 25% of her income. This year, the residence also welcomed cats, recognizing the importance of the emotional bond and the comfort a pet can provide.

Support fits each resident's pace and needs, whether now and then or over the long term. Support workers stand with women as they take their own steps, build skills and reach their goals. A round-the-clock presence, 24 hours a day, seven days a week, also helps provide a safe, stable and reassuring environment.

Beyond housing, the residence helps women move toward greater independence by drawing them into community life and helping them put down roots for good.

THE MARCELLE AND JEAN COUTU PERMANENT RESIDENCE

Located near La Fontaine Park, the Marcelle and Jean Coutu Residence welcomes autonomous women who have experienced homelessness or are at risk of becoming so. Built in partnership with the Société d'habitation et de développement de Montréal (SHDM), it offers a stable, safe place to live that helps women stay housed.

The residence includes 26 furnished studios, offering each woman a private, functional space. The common areas encourage exchange, social participation and the development of a genuine sense of community, at a pace and in a way that suits the residents. Pets, dogs especially, are welcome too, for the real difference they make to the well-being of many women.

Support here is part of the same continuum as the rest of Chez Doris. Residents get the help suited to their needs, occasional or ongoing, to keep them housed and improve their quality of life.

Over the years, a strong web of mutual support has grown inside the residence. The women form real bonds, help one another day to day, and participating actively in what's on offer. Under the Rent Supplement Program (RSP), housing costs are capped at 25% of a resident's income, giving them lasting access to affordable, safe housing.



TRANSITIONAL HOUSING RESIDENCE



In the Centre-Sud neighbourhood, near Berri-UQAM metro, the Saint-Hubert Street transitional residence offers a safe, structured place to live—a real springboard toward autonomy.

It is meant for women who are independent or nearly so, with supervised housing that helps them steady themselves, rebuild and rejoin community life. Above all, it offers a time of transition—room to catch their breath, hold on to their progress, and look ahead to stable, lasting housing.

Housed in a former hotel, it has 19 rooms plus shared spaces, including a kitchen and both private and shared bathrooms. It is for women aged 18 to 60, a safe place that helps prevent homelessness and supports women in transition—especially those leaving youth protection (DPJ) or navigating immigration, and people with reduced mobility.

A social worker is on site to support residents in their efforts, notably by facilitating connections with the various partners and services in the community.

Rent is set at 25% of residents' income. Service fees include meals, laundry and on-site services such as recreational and wellness activities.

The residence offers a safe, fitting place to live for a time, so women can find their balance again, grow more independent, and put down lasting roots in the community.

THE FULFORD RESIDENCE: AN INTEGRATED LIVING AND SERVICES ENVIRONMENT

The economic situation and the housing shortage have considerably increased demand for our services.

The Fulford Residence will let us bring together the services now spread across the day centre and the health and social services centre under one roof. Pulling them together means smoother continuity, easier access, and fuller support for women, all in one place.

At the Fulford Residence, we will be able to, among other things:

- meet essential needs by providing food, clothing, hygiene products and personal care;
- offer transitional housing to 20 women for a period ranging from two months to two years;
- deploy specialized support for Indigenous women, seniors and newcomers;
- provide comprehensive support through private consultation spaces bringing together social workers, psychosocial workers, health professionals, administrative and financial support, and housing assistance services;
- foster skills development and social participation through community activities, craft workshops, community cooking and Indigenous cultural activities.

More than a building, the Fulford Residence will be a safe, welcoming place built around women's real lives—one that nurtures stability, independence and well-being at every stage of their journey.





OUR PROGRAMS

Chez Doris has developed around twenty prevention and re-engagement programs that are accessible to all the women we serve, regardless of their situation.

- ▲ **FOOD SECURITY PROGRAM**
- ▲ **PERSONAL HYGIENE PROGRAM**
- ▲ **HOUSING SUPPORT PROGRAM**
- ▲ **PHYSICAL AND MENTAL HEALTH PROGRAM**
- ▲ **EMPLOYABILITY AND REINTEGRATION PROGRAM**
- ▲ **FINANCIAL MANAGEMENT PROGRAM**
- ▲ **INDIGENOUS SUPPORT PROGRAM**
- ▲ **SOCIAL AND RECREATIONAL PROGRAM**

PROGRAMS CONTINUOUSLY ADAPTED TO WOMEN'S NEEDS

The women who come to us begin a journey that can move from an emergency response—a meal, clothing, a safe place to rest—toward more structured forms of support, such as food assistance, psychosocial support, returning to school or accessing employment. Our services are designed to adapt to each woman's path, offering continuous, person-centred support that respects each woman's pace.

Through activities, follow-up and tailored programs, women can regain their footing, identify their strengths and gradually envision new possibilities for their future.

Strengthening clinical support and best practices

At Chez Doris, the continuous improvement of our intervention practices is at the heart of what we do. Guided in particular by trauma-informed and strengths-based approaches, our teams adapt their interventions to the complex realities of the women they support.

Over the past year, we strengthened our clinical supervision structure. Working alongside managers, the supervisors support our teams through coaching, consultations on complex situations, individual and group meetings, and knowledge-sharing activities.

Our team also contributes to skills development, the identification of training needs and coordination with our network partners. Their work advances our practices, improves our services and, above all, ensures support that is increasingly tailored, effective, and compassionate, for the women who come to Chez Doris.



LEVERS TO KEEP MOVING FORWARD

FOOD SECURITY PROGRAM

Because access to sufficient, nutritious and regular food remains essential, we offer meals every day at the day centre and the night shelter, along with snacks, coffee and tea available throughout the day. We also provide meals during activities, as well as food support in the form of gift cards and grocery baskets.

These different forms of support not only meet women's basic needs but also give them greater day-to-day stability. By reducing food insecurity, women can devote more energy to their well-being, their health and the the next steps they want to take.

In 2025-2026, Chez Doris offered three complete and nutritious meals per day, totaling nearly **81,000 meals** (an increase of more than 30%) and **15,000 snacks**, thanks to the valuable involvement of our volunteers and our kitchen team.

81,000+
MEALS

increase of more than 30%

15,000+
SNACKS

Throughout the year, there are many opportunities for women to share meals—whether day to day, during activities or at special events organized by our teams and many dedicated volunteers. These are moments that foster connection, reduce isolation and welcome women into spaces where they can gather in a atmosphere of respect and solidarity.

Over the past year, the day centre reorganized its food supplies, work methods and equipment, allowing for better management of donations and purchases while optimizing meal preparation. This has helped us enhance our meal service, providing more balanced, nourishing and varied meals, better suited to the needs of the women we support.

Requests for our monthly grocery assistance program for women living in housing rose sharply over the past year, a direct reflection of the continually rising cost of living. Every month, more than 260 women receive \$50 in food support in the form of a prepaid card, allowing them to make choices that match their needs, preferences and reality.

Faced with this growing pressure, we will need to consider enhancing the program in order to keep meeting needs adequately. For many women, this support represents much more than food assistance: it helps preserve their autonomy, their dignity and their quality of life in an increasingly difficult economic context.

PERSONAL HYGIENE PROGRAM

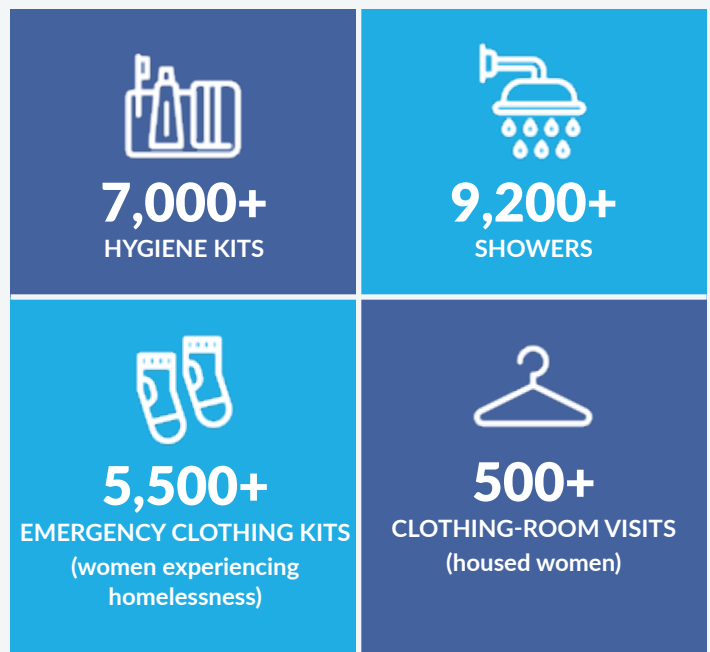
For women in emergency situations or great precarity, access to everyday essentials—washing, wearing clean and suitable clothing, self-care—remains essential, both to preserve their daily dignity and to make it possible to go back to school or enter the labour market.

As with food, the rising cost of living makes it increasingly difficult to meet these basic needs. At Chez Doris, we seek not only to address them but to go further, providing concrete support for women in their daily lives as they work toward greater stability.

Access to hygiene and personal care takes several forms at Chez Doris. We enhanced the daily shower service in particular by adding a second facility, doubling the capacity available each day. We also distribute hygiene product kits in our day centre, in our residences and to women living in housing—to support them every day.

We also invested in a washer and dryer, allowing women to do their laundry in a safe environment while doubling our capacity to offer this service. This helps reduce barriers to accessing basic care and maintaining dignified living conditions. It also allows us to launder essential clothing and to reduce waste.

At various points in the year, services such as manicures, pedicures, facials and hairstyling complement this offering. More than our basic services, these moments give women a break, a respite, and help strengthen their self-esteem. They offer a space where women can focus on themselves, in a caring and respectful setting. For many, it is also a concrete reminder that they deserve to be treated with respect and consideration.



HOUSING SUPPORT PROGRAM

Chez Doris firmly believes that stability comes through access to safe housing, but also through the ability to remain housed over the long term. For the women we support, housing represents much more than a roof: it is an essential foundation for rebuilding a sense of stability, a sense of security, dignity and autonomy.

At a time when the housing crisis continues to place significant pressure on the most vulnerable, we focus our efforts mainly on keeping women housed. Preventing evictions, supporting women in their dealings with landlords, helping them manage day-to-day challenges and intervening quickly when a situation becomes fragile are all at the heart of our approach.

Thanks to a dedicated team, women receive personalized support that can take various forms: housing searches, administrative processes, help settling in, psychosocial support and referrals to appropriate resources. This presence helps strengthen residential stability and foster lasting integration into the community.

Private Housing Programs

Launched in 2022, this program is made possible thanks to the support of the Azrieli Foundation, the Léger Family Foundation, the Jacques and Michel Auger Foundation and the Caisse de dépôt et placement du Québec. It aims to support women who often have little access to traditional housing programs.

In addition to intensive support in finding and keeping housing, participants receive concrete help to ease their move and allow them to make a fresh start in a safe, stable environment.

Thanks to a partnership with the Office municipal d'habitation de Montréal, Chez Doris has about thirty reserved residential places under the Rent Supplement Program (RSP). This measure allows women in vulnerable situations to access rent-geared-to-income housing.

Beyond access to housing, we also support women throughout their housing journey, in order to help them remain housed and prevent them from losing their home. This approach helps strengthen their stability, autonomy and quality of life over the long term.





1,263

MEDICAL APPOINTMENTS

were provided over the year, allowing women to access health care in a welcoming, respectful environment suited to their reality.

PHYSICAL AND MENTAL HEALTH PROGRAM

The Trottier Foundation supports the development of the Chez Doris medical clinic through a three-year grant. This support lets us keep building a care model adapted to the realities of the women using our services. It contributes to services, developing clinical tools and strengthening essential collaborations. The grant also supports the community health coordinator position, central to the clinic's evolution.

Thanks to this support, the clinic continues to grow and strengthen its role as a key access point for adapted, accessible and compassionate health care. It continues to take shape as a consistent service rooted in women's daily lives.

Emily Vaillancourt, community health coordinator, plays a central role in the clinic's development. She oversees the rollout of new services, the recruitment of volunteers and health interns, and the development of partnerships. She also helps structure responsive, accessible and compassionate care pathways and support a constantly evolving practice.

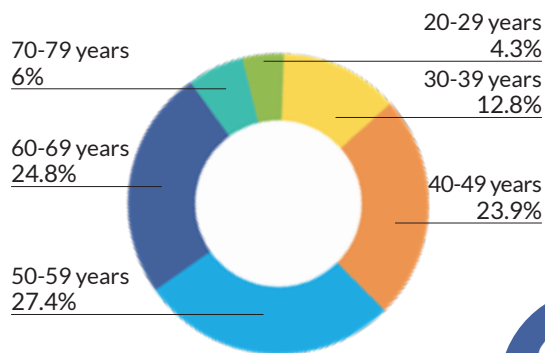
Her work fosters better continuity of care and strengthens the clinic's capacity to meet the complex and diverse needs of the women supported by Chez Doris.

Over the past year, we carried out a health needs analysis through questionnaires completed by women using our services. This data helps us better understand their profile, their state of health and the obstacles they face in accessing care. It guides the development of services and the planning of actions, so that the clinic remains attentive to the realities women express and responds to them concretely.

This approach reflects our commitment to continually adapting our services to women's real needs and to building a model of care grounded in listening, lived experience and best practices.

NEEDS ANALYSIS REPORT PROFILE OF THE RESPONDENTS

DISTRIBUTION BY AGE



66.1%
DECLARE HAVING HEALTH PROBLEMS

SELF-ASSESSMENT OF HEALTH STATUS





EMPLOYABILITY AND REINTEGRATION PROGRAM

In addition to meeting basic needs—whether a meal, a bed, temporary or permanent shelter and psychosocial follow-up—Chez Doris believes it is essential to offer support for social reintegration. This takes many forms: participating in workshops, going back to school or gradually entering the labour market, depending on each woman's pace and circumstances.

This support aims to help women define their next steps and move toward greater independence.

The Peter-McGill Brigades

Funded by the Peter-McGill Neighbourhood Round Table, this program enables women to participate in paid community initiatives. Over the year, participants engaged in various activities in collaboration with local organizations, including Éco-quartier and Innovation Jeunes. They helped maintain community gardens, plant in green alleyways, distribute food to seniors, and run neighbourhood clean-up brigades twice a week. Beyond the tasks themselves, these experiences allow them to develop new skills, build confidence and create meaningful ties with their community. These community-based experiences are at the core of a program that supports the development of agency, strengthens a sense of belonging and fosters active participation in collective life.

Kitchen Pre-employment Program

Thanks to the support of the City of Montréal, this program helps participants acquire skills related to the restaurant industry. Through hands-on experience, they develop knowledge of food preparation, hygiene and sanitation, meal planning and teamwork within a structured setting. They also build transferable skills such as time management, communication, reliability and collaboration. Each participant completed the certified MAPAQ training in food hygiene and sanitation.

Chez Doris's kitchen pre-employment program thus allows women to develop basic culinary skills while strengthening essential abilities such as teamwork, communication and problem-solving. It provides a space for learning and confidence-building that supports both personal development and entry into the labour market.



Collaborations with Mandy's Gourmet Salads and Le Bakelab allowed participants to become familiar with the workplace and put their learning into practice. These experiences helped build their confidence and professionalism while giving them a better understanding of the expectations and realities of the job market.

Over the past year, the program supported several cohorts, and new partnerships enriched the offering with external workshops and learning opportunities, broadening the experiences available to participants.

They also benefited from paid work opportunities, as well as support for transportation and the purchase of suitable work clothing. These concrete measures encourage their participation in the program and support their transition to employment.

With an eye to growth, steps are under way to enhance this offering, notably by establishing a partnership with the Centre de services scolaire de Montréal and launching a new pre-employment program in retail inventory management in the clothing sector.

This program offers personalized support, provided by a psychosocial worker, to help women return to school or enter the labour market. It supports participants in defining their goals and exploring different avenues—whether obtaining a high school diploma, enrolling in college or university programs, or developing specific skills, notably through language courses or training on tools such as Excel.

With accessibility in mind, the program implements measures to reduce financial and practical barriers, including covering certain costs related to transportation, tuition and required materials. It also supports participants in their job searches or enrolment in pre-employment programs, depending on each woman's path, aspirations and needs.

This year, one participant reached an important milestone by being admitted to the ITHQ's baking program in culinary arts, after completing our kitchen pre-employment program. Her path reflects the impact that tailored, caring support can have. In a structured, supportive setting that allowed her to progress at her own pace, she was able to consolidate her learning, build her confidence and shape a clear, actionable professional plan.

Every path is unique, yet all reveal women's capacity to regain confidence in their abilities, strengthen their independence and look ahead to new possibilities for their future.





FINANCIAL MANAGEMENT PROGRAM

Our financial management program supports women in taking back control of their finances, notably by drawing up a budget suited to their circumstances. It also aims to help maintain that balance, adjusting strategies as their situation changes.

This program relies on personalized support, including, where needed, a referral to psychosocial services. It helps women better understand their situation, ask the right questions and identify concrete solutions to improve their financial stability.

This voluntary program supports women in taking back control of their finances, notably through budget management in trust, bill payment and drawing up a suitable budget. Our staff offers personalized support, including psychosocial follow-up and, where needed, referrals to other services.

In a context where the rising cost of living increases needs, demand for this program is growing rapidly. We have begun efforts to modernize it, notably by introducing bank deposits, to make managing and accessing funds easier.

We also wish to review and adapt the program to new realities, notably by developing more personal-finance workshops—offered at the service centre as well as the day centre and our residences—to strengthen women’s financial independence at every stage of their journey.

INDIGENOUS SUPPORT PROGRAM

Our cultural activities seek to recognize, celebrate and bring Indigenous cultures to life through workshops, moments of sharing and community events. They take many forms: engaging in pow-wows, making ribbon skirts, beading and community cooking, as well as marking significant dates such as National Indigenous Peoples Day and the National Day for Truth and Reconciliation. Storytelling, shared narratives and oral traditions also enrich these spaces.

These activities are offered with a view to cultural continuity and the transmission of knowledge. They support Indigenous women in expressing, valuing and strengthening their cultural identity, while fostering intergenerational ties and the sharing of traditions.



Beyond the activities themselves, these gatherings create safe spaces where participants can reconnect with their culture, build meaningful ties with other women and nurture a sense of belonging to their community. They contribute to participants’ well-being, inclusion and fulfillment.

SOCIAL AND RECREATIONAL PROGRAM

Many women who come to Chez Doris live in contexts marked by isolation and precarity. The social and recreational program offers a safe, inclusive space, conducive to building connections and strengthening self-esteem, through meaningful experiences and new discoveries.



PROGRAM HIGHLIGHTS

Creative expression and skills development

Art, crochet, knitting and sewing workshops allow participants to explore their creativity, develop new skills and support their emotional well-being.

Physical well-being and inner resilience

Activities such as yoga, low-impact exercise and dance sessions support physical well-being, help reduce stress and promote greater emotional stability.

Cultural discovery

Cultural outings, notably museum visits and theatre outings, offer opportunities for discovery and for connecting with Montréal's cultural life.

Community life and a sense of belonging

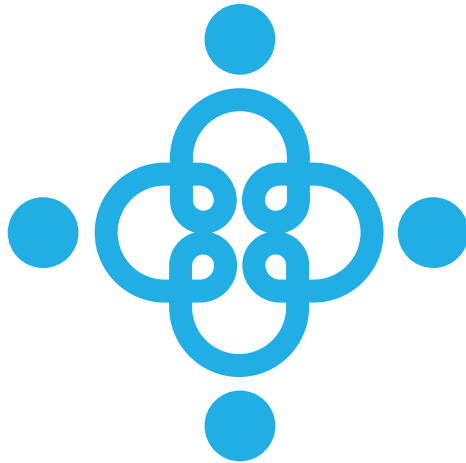
Celebrations—be they cultural festivities or birthdays—create shared moments that deepen connections and highlight the rich diversity of each person's path.

Leisure and building social ties

The film club, game days, the reading circle and group outings help break isolation and foster the emergence of meaningful relationships among participants.

A woman with short brown hair and glasses, wearing a blue t-shirt and a black lanyard, is smiling warmly. She is leaning over a table, and her hands are visible near a small, dark-colored animal, possibly a cat or a dog. The background is a blurred indoor setting with warm lighting. A dark green diagonal shape is in the top left corner.

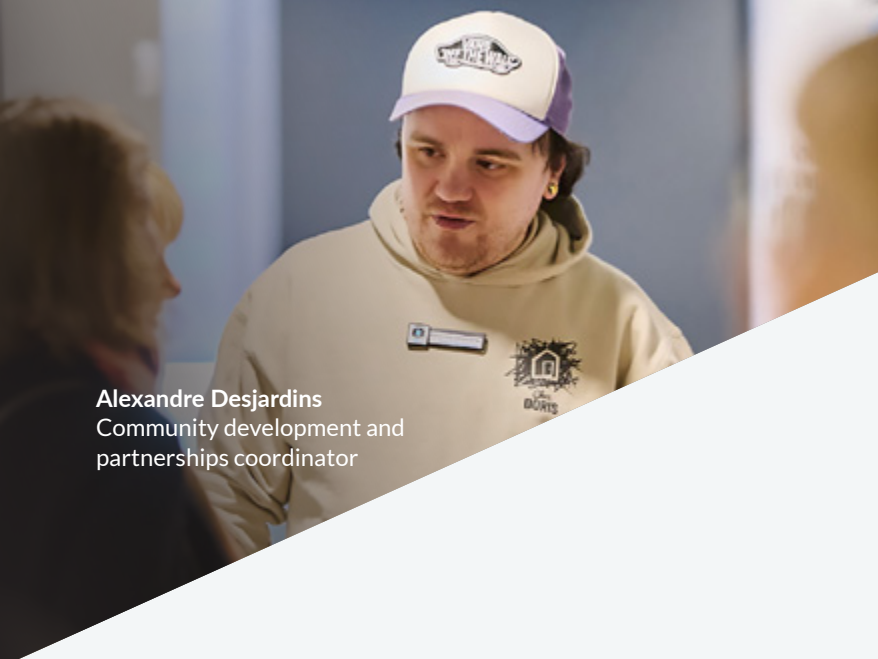
OUR NETWORK



BUILDING PRACTICAL SOLUTIONS

Chez Doris would not be the same without the collaboration of local organizations and partners. Aware that we cannot meet every need, when necessary we direct women to the right services at the right time—whether food banks, medical services, shelters or specialized resources. In the same way, Chez Doris has also become a trusted resource to which our partners direct women when they need support.

Active partnerships with several local players—notably the Makivvik Corporation, the Cabot Square teams, socio-community officers and the Youth Centres—help enhance and complete our range of services while ensuring better continuity in the journeys of the women we support.



Alexandre Desjardins
Community development and
partnerships coordinator

OUR COMMUNITY INVOLVEMENT

The power of the network

Chez Doris continued and strengthened its presence within many coordinating bodies, consolidating its role as a key player in Montréal's ecosystem for homelessness and support for women in precarious situations.

Throughout the year, Chez Doris maintained its engagement in numerous round tables, strategic committees and coalitions working in the areas of homelessness, mental health, urban safety and women's rights, in order to participate in collective reflection and discussions on the directions to take regarding policy and practice.

These collaborative spaces encourage the exchange of expertise, deepen partnerships, and help shape responses that are more closely attuned to the realities women in precarious situations face.

Intersectoral collaboration is essential

The teams at Chez Doris work together with several clinical and community partners, including Médecins du Monde, the Connexion Team, CIUSSS facilities, as well as mental health and food security resources. This approach allows women to receive support that is better suited to their situation and facilitates their access to the services they need. Added to these are the Makivik Society and community outreach workers who collaborate with managers, clinical supervisors, and local organizations.



REACHING OUT TO RAISE AWARENESS

Chez Doris also participated in awareness and knowledge-sharing events. At the Nuit des sans-abri (Homeless Persons' Night), the organization hosted a booth to raise public awareness of the realities of women's homelessness, the difficulty of accessing stable and safe housing, and food insecurity—issues affecting a growing number of women in Montréal. This also provided an important platform to make women's voices heard and shed light on their realities.

In this same spirit of outreach, solidarity and learning, Chez Doris participated in the conference of the Canadian Alliance to End Homelessness (CAEH). This presence reflects how important it is for the organization to remain actively engaged in discussions around these major issues—both to share its expertise and to support partners across the country. It also allows the organization to draw inspiration from initiatives elsewhere in Canada, in order to enrich its practices and continue developing adapted, humane and safe responses for women in precarious situations.

RAISING AWARENESS AMONG FUTURE GENERATIONS

Chez Doris also maintained and expanded its ties with the education sector:

- 🏠 On a panel at Concordia University, addressing the links between climate justice, housing and social inequalities.
- 🏠 On a panel at Cégep du Vieux-Montréal, to raise awareness among students in recreational management and intervention about the various issues experienced by women in precarious situations, possible solutions and the importance of recreation in daily life.
- 🏠 On a panel at Edward Murphy Elementary School as part of the “Socks in a box” event, on the realities of homelessness in Montréal, the needs of women in precarious situations and the importance of donations for the community, raising awareness among the next generation at the same time.

The organization also welcomed several students from different educational settings, notably:

- 🏠 McGill University’s Faculty of Law, with a view to raising awareness and training future professionals
- 🏠 Sacred Heart High School to present the organization’s services and the importance of the work done with women
- 🏠 Lower Canada College, for a volunteer experience and a presentation of the organization, raising young people’s awareness of the city’s social realities.

We also consider it our collective responsibility to inform and educate young people and future professionals about the realities of women’s homelessness. By engaging them now, we help build committed allies, the better to prevent and respond to it.

TABLES AND COMMITTEES

Table des groupes de femmes de Montréal (TGFM):

This body brings together various players in the city; its mission is to promote and defend women’s interests from a feminist perspective of gender equality. Chez Doris takes part and also sits:

- 🏠 on the health subcommittee, discussing the Action Plan for Women’s Health and Well-Being and the health issues women face in Montréal

Mental Health Coordination Table for the territory of the CIUSSS du Centre-Ouest-de-l’Île-de-Montréal:

Chez Doris acts as a local network player, offering various services to women in precarious situations, and sits:

- 🏠 on the clinical subcommittee, addressing various clinical issues encountered by members and partners, to discuss potential solutions;
- 🏠 on the housing subcommittee, mandated to create useful tools for partners on local organizations offering different types of housing.

Together North and South Committee: focused on the issues Indigenous and Inuit people face, bringing together organizations in Montréal and the North.

Cabot Square Urban Safety Committee: bringing together several players in the Cabot Square area, providing various updates on the state of affairs, initiatives and upcoming events.

Centre-Sud Homelessness Committee: bringing together several organizations in the Centre-Sud neighbourhood, enabling discussions on homelessness and opportunities for collaboration. Chez Doris is directly involved owing to its residences located in the area.

Table de concertation du faubourg Saint-Laurent (TCFSL): in the context of developing its new residence on Saint-Hubert Street, Chez Doris also joined this table.

The TCFSL fosters dialogue among stakeholders in the Faubourg Saint-Laurent neighbourhood to improve the well-being of those who live there or visit.

Chez Doris’s participation on the cohabitation committee reflects a proactive desire to foster the harmonious integration of our services into the neighbourhood and to contribute to local dynamics.

COALITIONS

More than ever, Chez Doris is actively involved in these groups to advance issues for women in vulnerable situations.

Mouvement pour mettre fin à l'itinérance à Montréal (MMFIM), whose mission is to collaborate with all stakeholders seeking to improve the conditions of people experiencing homelessness, in order to prevent and end homelessness in Montréal

Partenariat pour la prévention et la lutte à l'itinérance des femmes (PPLIF), whose mission is to highlight the specific issues and needs of women in difficulty

Réseau d'aide aux personnes seules et itinérantes de Montréal (RAPSIM)

Réseau de la communauté autochtone à Montréal (RÉSEAU)

Le regroupement des organismes en hébergement pour les personnes migrantes (ROHMI): to take part in communities of practice on the various issues migrants experience and the challenges related to intervention. This goes hand in hand with our commitment to help women with precarious migration status, whom we will welcome at the transitional housing residence on Saint-Hubert Street.



OUR VOLUNTEERS To enhance our services

At all our service locations, nearly one hundred volunteers are the true pillars of our mission.

7,400+
VOLUNTEER
HOURS

120+
VOLUNTEERS

40+ CORPORATE VOLUNTEER
GROUPS

Chez Doris thrives thanks to the generosity and commitment of its volunteers and corporate partners, who give their time, resources and expertise. They prepare meals, organize donations, assemble hygiene kits, support special events and lead activities that nourish both body and spirit. From yoga sessions to exercise classes, crochet and sewing workshops, volunteers offer activities that foster both physical and mental well-being, while providing concrete support such as tax help, résumé writing and computer classes.

This year, the volunteer coordinator reached out to the community by taking part in several volunteer fairs, notably at McGill University, Vanier College, in the Peter-McGill neighbourhood and at the job fair at the Palais des congrès de Montréal. These opportunities helped raise the profile of Chez Doris's mission, build public awareness of our cause and inspire new volunteers to get involved.

Corporate volunteer groups hold an important place in the life of Chez Doris. Their presence provides concrete support for daily activities while giving volunteers the opportunity to gain a deeper understanding of our mission and connect with the realities experienced by the women we support. These collaborations also help raise awareness within corporate circles and build lasting ties grounded in genuine commitment and solidarity.



As Chez Doris evolves, we want to offer our volunteers new opportunities to get involved, making greater use of their talents, expertise, and ideas in service of our mission.

INSTITUTIONAL PARTNERSHIPS

With a real impact

Our community and institutional partners play an essential role in advancing the mission of Chez Doris. Through their commitment, their services, their donations and their ongoing collaboration, they help strengthen our capacity to support women in precarious situations.



Diane Pilote, Executive Director, Chez Doris and Carolynn Leclair, President and CEO, Groupe Leclair

This collaboration allows us to act in a coordinated way, to meet more effectively the complex and evolving needs of women, and to foster their sense of belonging stability and reaffiliation in the community.

Thanks to this strong, committed network, our impact is more coherent, more humane and always deeply rooted in solidarity. Thank you.



The Belmon Construction team

Montreal Alouettes
Bota Bota
Café Starbucks Canada
Catherine Benny
Centric Canada Apparel & Accessories ULC
Chalets Terrace
Château D'Ivoire
Coca-Cola Canada
Corner Collection
Deschenaux Lemarbre
Agente d'artistes
Distribution alimentaire Aubut
Emery & Opal
Energy Transportation Group
Ferrero Canada
Flo Canada
Fusion MD

Galerie Roccia
Groupe Tidan
House of Liberty Fashion
Hydro-Québec
ICNA Sisters Canada
Indie Soup Montreal
Iris+Arlo
Jatoba
La Canadienne
La Vie en Rose
Lambert Design
Lee Valley
Les Grands Ballets Canadiens
Les Productions Jessica Harnois
Lucille's Avenue des Canadiens
Maison Boulud
Mandy's
Manhattan Concepts
MediaGraph

Modes Corwik
NAOS North America
Opéra de Montréal
Orchestre classique de Montréal
Orchestre Métropolitain
Orchestre symphonique de Montréal
Projet Boîte à chaussures pour les femmes
Restaurant Gus
Sutton ImmoBilia
Tiradito Restaurant
The Shoebox Project
Tricoteuses Maison d'Esther
Vide ta Sacoche
Wacoal Canada
Westin Tremblant
XPOLogistics
Yves Rocher

OUR MAJOR DONORS*

Precious and essentials

In a context where needs remain significant and realities increasingly complex, our donors choose to support Chez Doris year after year. Their faithful and generous commitment is a fundamental pillar of our capacity to support women in precarious situations.

Thanks to them, our service locations remain safe, welcoming spaces where hope is possible, and where women can regain their footing, rebuild their lives and find new opportunities to move forward. Each contribution is a concrete act of trust in our mission and directly supports the women we serve as they rebuild stability, autonomy, and reaffiliation within the community. We extend our deep gratitude for their solidarity and their lasting commitment, which make a real and human impact possible, day after day.



Azrieli Foundation
 Birks Family Foundation
 Bonnie Leyton
 Cadillac Fairview Corporation Limited
 Canada Mortgage and Housing Corporation (CMHC)
 Carol & Michael Harrison
 Church of Jesus Christ of Latter-day Saints
 CIUSSS Centre Sud de l'Île de Montréal (French-only)
 City of Montreal
 Connor, Clark & Lunn Foundation
 Congrégation de Notre Dame du Québec
 Corporation des Sœurs Franciscaines
 Dean & Bédard Foundation
 Drummond Foundation
 Echo Foundation
 Émilie Tavernier Gamelin Foundation
 Eric T. Webster Foundation
 Estate of Ginette Gauthier
 Estate of Lillian Zelinsky
 Estate of Margaret Tuite Green
 Ethel Groffier

Family George Hogg Foundation
 Family Infilise Foundation
 Family Leclair Foundation
 Family Léger Foundation
 Family Mongeau Foundation
 Family Trottier Foundation
 Family Wicha Foundation
 Family Zeller Foundation
 Fondation 11:11
 Fondation Marcelle et Jean Coutu
 Fondation Choquette Legault
 Fondation J.A. DeSève)
 Fulford Residence
 Gendron & Rose Fund
 Government of Canada
 Group Leclair
 Harper Foundation
 Hewitt Foundation
 Hockey Helps the Homeless
 Holt Foundation
 J. Armand Bombardier Foundation
 Jarislowsky Foundation
 Jill Staenberg
 Lederman Foundation

Macdonald Stewart Foundation
 Madeleine Paquin
 Michael Sinclair
 National Bank of Canada
 Notre Dame Congregation of Quebec
 Phyllis Lambert Foundation
 Power Corporation of Canada
 RBC Foundation
 Rossy Foundation
 Saint Patrick of Montreal Foundation
 Scotiabank
 Sharon Azrieli
 Sisters of Saint Joseph of Saint Hyacinthe
 TD Bank Group (TD)
 TFI International
 Trottier Family Foundation
 Wilhelmina Van Leeuwen

*This list represents donations exceeding \$25,000 during the fiscal year (April 1, 2025 to March 31, 2026)

OUR BOARD OF DIRECTORS, ITS COMMITTEES A Clear Governance Structure



BOARD OF DIRECTORS

- Jill Hugessen**
Chair
- Annie Gagnon Larocque**
Vice-Chair
- Eric Thauvette** (not in the photo)
Treasurer
- Thierry Leroux-Demers**
Secretary
- Diane Pilote**
Executive Director
- Katherine Chartrand**
- Marie-Pierre Habas-Gerard**
(not in the photo)
- Camille Janvier-Langis**
- Ray Kazan**
- Laura Kennedy**
- Mary Larson**
(not in the photo)
- André Morris**
- Mark Shalhoub**
- Kseniya Veretelnik**
(not in the photo)

EXECUTIVE COMMITTEE

- Jill Hugessen**
Chair
- Annie Gagnon Larocque**
Vice-Chair
- Eric Thauvette**
Treasurer
- Thierry Leroux-Demers**
Secretary
- Diane Pilote**
Executive Director

FINANCE AND INVESTMENT COMMITTEE

- Eric Thauvette**
Chair
- Marie-Pierre Habas-Gerard**
- André Morris**
- Stéphane Camus**
External
- Barbara Obertleitner**
External

HUMAN RESOURCES COMMITTEE

- Mary Larson**
Chair
- Ray Kazan**
- Kseniya Veretelnik**
- Maria Kyres**
External

NOMINATIONS COMMITTEE

- Thierry Leroux-Demers**
Chair
- Members of the executive committee

BUILDINGS COMMITTEE

- Annie Gagnon Larocque**
Chair
- Laura Kennedy**
- Marie-Claude Grondin**
External
- Mike Lisi**
External
- Robert Manningham**
External
- Roger Plamondon**
External
- Ryan Zamestrieus**
External

COMMUNICATIONS AND PHILANTHROPY COMMITTEE

- Mark Shalhoub**
Chair
- Katherine Chartrand**
- Camille Janvier-Langis**

The Executive Director and the Chair of the Board are ex officio members of all committees. To simplify reading, their names are not repeated in the list below.

OUR TEAM

Committed to Growth

With six service centres—including three residences, a day centre, a night shelter and a health and social services centre—Chez Doris relies on the commitment of more than 100 people who, every day, welcome women warmly and without judgment.

Whether offering a little respite, supporting women toward greater autonomy or aiding their rebuilding, our team is at the heart of every intervention. Under the leadership of our Executive Director, it ensures the smooth running of operations, the development of tailored services and the realization of our mission.

To respond to complex and constantly evolving realities, we continue our efforts in training, health and safety at work. This year, teams benefited from training in first aid, mental health and addiction, naloxone administration and safe intervention (OMEGA).

With a view to continuous improvement, we held regular health and safety committee meetings and quarterly meetings with employees. We also undertook work with an external consultant to develop a sustainable prevention program, while we rolled out awareness workshops on psychosocial risks under Bill 27, with a participation rate of nearly 80%. Finally, we implemented a performance evaluation tool and a telemedicine service to support staff well-being and development.

Whether they work directly with women, help advance our practices or support the organization's operations, all contribute to the continuity and evolution of Chez Doris.



MANAGEMENT COMMITTEE

Diane Pilote

Executive Director

Noémie Alt

Director, Facilities and Information Technology

Véronic Bouchard

Director, Finance

Tania Filippone

Director, Programs and Services

Marie-Pierre Grenier

Director, Communications and Events

Isabelle Lemieux

Director, Service Centres

Elise Monaghan Joubert

Director, Philanthropy

Karine Pineault

Director, Human Resources



OUR FINANCIAL STATEMENTS

SUMMARY OF FINANCIAL STATEMENTS

Operating results for the fiscal period ended March 31, 2026,
with comparative numbers for 2025

REVENUE	2026	2025
	\$	\$
Federal Grants		
Reaching Home / Vers un chez-soi (VCS): Indigenous Housing Program	211,307	209,506
Urban Programs for Indigenous Peoples	30,458	44,951
Summer Employment	20,591	17,687
Community Volunteer Income Tax Program	-	2,785
	262,356	274,929
Provincial Grants		
Centre intégré universitaire de santé et de services sociaux du Centre-Sud-de-l'Île-de-Montréal (CCSMTL): Intermediate Action Plan for Homelessness (PAII) Measure 6.1 Support and consolidation of the continuum from emergency shelter to transition	1,150,000	1,150,000
Community Organizations Support Program (PSOC), Global Mission	400,737	389,210
Rent Supplement Program (PSL)	251,215	-
Housing Stability with Support Program (SRA) – Measure 5.3	193,200	264,675
Warming Center	233,642	233,962
Warming Center – Expansion	115,000	-
Support for women experiencing homelessness	-	189,041
Strengthening support for women experiencing homelessness in winter	-	111,550
PSOC and PAII Measure 6.2 – Consolidation of shelter services	102,200	100,000
PSOC – Rapid Housing Initiative (ICRL)	75,713	74,083
Food Security Support Initiative (SISA)	75,000	-
Reaching Home / Vers un chez-soi (VCS)	69,770	-
PAII Measure 5.3 – Support for transitional and/or permanent social and community housing	52,938	52,938
PAII Measure 5.3 – Top-up	-	20,977
Reaching Home / Vers un chez-soi (VCS) – Social housing support	-	37,785
Reaching Home / Vers un chez-soi (VCS) – Community Encampment Response Plan (PRCC)	19,259	-
Operationalization of a transitional resource	-	10,741
Services Québec and others	9,872	-
	2,786,331	2,634,962
Municipal Grants		
Ville de Montréal – Pre-employability Program	161,632	102,385
Ville de Montréal / Ville MESS – Food Security Program	36,000	-
	197,632	102,385

SUMMARY OF FINANCIAL STATEMENTS (CONTINUED)

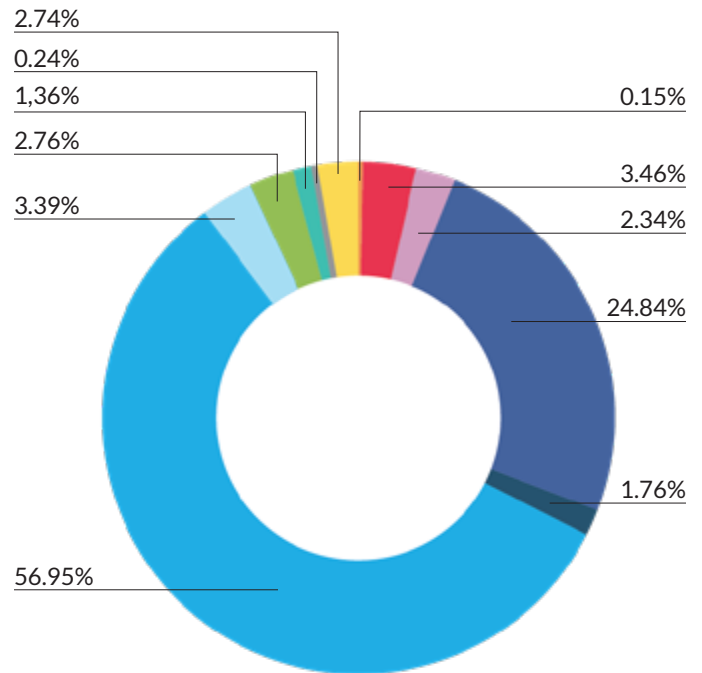
REVENUE (continued)	2026	2025
	\$	\$
Donations and bequests	6,388,640	5,086,588
Fundraising cocktail and events	380,785	8,143
In-kind donations	310,046	141,992
Rental income	152,661	152,502
Management fees - De Champlain - SHDM	26,934	25,428
Interest and dividends	307,360	326,404
(Loss) Gain on fair value of investments	16,725	(3,022)
Amortization of deferred contributions related to capital assets	388,228	730,959
	11,217,698	9,481,270
<hr/>		
Expenses		
Programs and services	6,781,612	5,463,303
Occupancy costs	1,656,784	1,694,782
Fundraising and communications	1,351,988	1,117,902
Operations and administration	1,369,268	1,178,449
	11,159,652	9,454,436
Excess of revenue over expenses	58,046	26,834

NOTES ON CAPITAL ASSETS
as at March 31, 2026

	Cost at March 31 2025 \$	Acquisitions \$	Disposals \$	Cost at March 31 2026 \$
Land and buildings	9,469,813	49,384		9,519,197
Land and buildings – Held for rental	6,603,379	-		6,603,379
Land and buildings – Not yet in service	13,579,974	5,480,342		19,060,316
Total land and buildings	29,653,166	5,529,726		35,182,892
Furniture and other equipment	740,015	282,376		1,022,391
IT equipment	203,552	12,573		216,125
Total capital assets	30,596,733	5,824,675		36,421,408

SOURCES OF OUR FUNDING

	\$	%
Federal grants	262,356	2.34
Provincial grants	2,786,331	24.84
Municipal grants	197,632	1.76
Donations and bequests	6,388,640	56.95
Fundraising cocktail and events	380,785	3.39
In-kind donations	310,046	2.76
Rental income	152,661	1.36
Management fees	26,934	0.24
Interest and dividends	307,360	2.74
(Loss) Gain on fair value of investments	16,725	0.15
Amortization of deferred contributions related to capital assets	388,228	3.46
Total	11,217,698	100



Chez Doris

1430 Chomedey Street, Montréal (Québec) H3H 2A7

T: 514 937-2341

info@chezdoris.org

Visit us at:

chezdoris.org